

THE FACILITIES FORUM

March 2023, VOLUME 54



EMPLOYEE SPOTLIGHT

Chris Redmond

Access Control Coordinator

Chris grew up outside of Barnard, MO. He currently lives in Braddyville, IA. He has been working for Facility Services for 9 years! He enjoys the people he works with and the benefits Northwest offers such as the PTO. Prior to working at Northwest, Chris worked in construction and owned his own taxidermy business. In 2012, he won the State Taxidermy championship in Pennsylvania.

Chris and his wife Katrina have 2 boys, Colt who is 6 years old and Chase who is 3 years old.

Outside of work, Chris likes hunting, fishing, hanging out with friends and family, and beating his 6 year old at Xbox. He likes fishing boundary waters in Minnesota, hunting in Pine Ridge Nebraska, and traveling to the beach in Mexico.

Thank you for your dedicated 9 years at Northwest and the Facility Services department!



INSIDE THIS ISSUE

- ♦ Message from the AVP
- ♦ Employee Recognitions
- ♦ EHS Corner
- ♦ You're Invited
- ♦ Project Updates
- ♦ Facilities On The Go
- ♦ We're Hiring
- ♦ Contact Us

WE DON'T "HAVE"
A GREAT DAY, WE
"MAKE IT" A
GREAT DAY!

MESSAGE FROM THE AVP



Team,

In many of my notes in the monthly newsletter, I typically end by writing something to the effect “my sincere appreciation for all you do!” Please know that I mean that statement and yet fail to say it often enough. Reflecting today, I think of members of our department who have retired or are soon retiring. To the many years of dedicated service to our department and the Universitymy sincere appreciation. For our current staff, focusing on the mission and putting forth those extra efforts for ‘every student – every day’.....my continued appreciation.

I would like to congratulate Amber Newham on her new position in Capital Programs....and as well, express my appreciation for all of the high quality and creative monthly newsletters she produced each month, as this one is her last. Thanks, Amber.

Let’s appreciate each other for being a part of our can-do team.

Dan

Suggestions?

We want to hear your ideas on how to better serve our customers and improve your department’s work environment.

If you have a suggestion please feel free to drop it in the “Comments” box located in the Facility Services Administration office area.

EMPLOYEE RECOGNITIONS

HAPPY WORK ANNIVERSARY!

David Atkins, Groundskeeper	9 years
Clint Farnan, Custodian	13 years
Nancy Ozanne, Transportation Supervisor	4 years
David Rodrick, Custodian	9 years
George Spire, Plant Operator	21 years
Lindsey Wood, Painter	2 years

Welcome our new staff members!

Lacy Carlson, Custodian
Brianna Colvin, Custodian

Congratulations!

Tim Jackson accepted the Senior Driver position.

Jeremy Johnson accepted the Life Safety Systems Technician position.

Amber Newham accepted the Capital Programs Coordinator position.

EHS CORNER

Safety Meeting

Attendees:

Ben Rogers, Shannon Long, Rick Swaney, Troy Brady, Lauren King, Barb Wheybrew, Sonny Scadden, Tammy Welch

Items discussed:

- High visibility and non-slip tape for Lamkin bleacher stairs
- Mirror for Union first floor dish room hallway
- Vehicle backing safety
- Walking surfaces and eyes on path

EHS CORNER

March is National Ladder Safety Month

Almost every home in the United States has one, and chances are you have used one personally either at work or at home. From changing out a lightbulb to getting on top of a roof, ladders are a common piece of equipment used in almost every home or building and appear to be harmless — and yet according to Injury Facts, thousands of people are killed due to falls from a ladder or scaffolding work. In fact, falls are the second leading cause of death next to highway crashes.

Understanding the different types of ladders as well as safe ladder practices are key to preventing falls and other potential injuries.

Here are some helpful tips to always keep in mind when using a ladder provided by OSHA:

Read and follow all labels/markings on the ladder.

Avoid electrical hazards! – Look for overhead power lines before handling a ladder. Avoid using a metal ladder near power lines or exposed energized electrical equipment.

Always inspect the ladder prior to using it. If the ladder is damaged, it must be removed from service and tagged until repaired or discarded.

Always maintain a 3-point (two hands and a foot, or two feet and a hand) contact on the ladder when climbing. Keep your body near the middle of the step and always face the ladder while climbing (see diagram).

Only use ladders and appropriate accessories (ladder levelers, jacks or hooks) for their designed purposes.

Ladders must be free of any slippery material on the rungs, steps or feet.

Do not use a self-supporting ladder (e.g., step ladder) as a single ladder or in a partially closed position.

Do not use the top step/rung of a ladder as a step/rung unless it was designed for that purpose.

Use a ladder only on a stable and level surface, unless it has been secured (top or bottom) to prevent displacement.

Do not place a ladder on boxes, barrels or other unstable bases to obtain additional height.

Do not move or shift a ladder while a person or equipment is on the ladder.

An extension or straight ladder used to access an elevated surface must extend at least 3 feet above the point of support (see diagram). Do not stand on the three top rungs of a straight, single or extension ladder.

The proper angle for setting up a ladder is to place its base a quarter of the working length of the ladder from the wall or other vertical surface (see diagram).

A ladder placed in any location where it can be displaced by other work activities must be secured to prevent displacement or a barricade must be erected to keep traffic away from the ladder.

Be sure that all locks on an extension ladder are properly engaged.

Do not exceed the maximum load rating of a ladder. Be aware of the ladder's load rating and of the weight it is supporting, including the weight of any tools or equipment.



YOU'RE INVITED

Below is a list of some upcoming events for **April**. For a full list and event details visit <http://calendar.nwmissouri.edu>.

- **April: Sexual Assault Awareness Month** - The goal is to bring public awareness about sexual violence and educate communities on how to prevent sexual assault. Join Wellness Services Education & Prevention at one of their events this month!
 - 4/3, All Day, What Were You Wearing Art Exhibit
 - 4/4, All Day, SAAM Day of Action
 - 4/4, 5:30, Take Back the Night
 - 4/18, 6:00, Engage Training
 - 4/26, All Day, Denim Day
 - 4/29, Last Day of What Were You Wearing
- **Northwest Awards & Recognition Ceremony** - 4/3 from 3:00 pm - 5:00 pm in the Union, Ballroom. Refreshments will be served at 3:00 and ceremony starts at 3:30.
- **Northwest Week-Rec x BBQ-Spring Fling** - 4/3 from 3:00 pm - 7:00 pm at the College Park Pavilion. There will be outdoor activities and food.
- **Career Services: Summer Job Fair** - 4/4 from 9:00 am - 12:00 pm at the Hughes Fieldhouse.
- **Canoes and Kayaks on Colden Pond** - 4/12 & 4/13 from 12:00 pm - 3:00 pm.
- **Martindale Third Floor Ribbon Cutting and Open House** - 4/13 from 11:30 am - 1:00 pm. The ribbon cutting will be followed by an open house of the newly renovated third floor in Martindale Hall.
- **Student Senate: Spring Blood Drive** - 4/19 - 4/21 from 11:00 am - 4:00 pm in the Union, Tower View Room.
- **Student Activities Council Spring Tailgate and Concert** - 4/21 at the Hughes Fieldhouse. Tailgating is in the parking lot and starts at 4:30 pm with food, games, and shopping. The concert is from 7:00 pm - 9:00 pm.
- **Faculty and Staff Bearcat Bash** - 4/26 from 3:00 pm - 5:00 pm at the College Park Pavilion. A free meal will be provided along with a cash bar, music, and plenty of door prizes.

PROJECT UPDATES

Colden Hall Cybersecurity



Hoop Shed Renovation



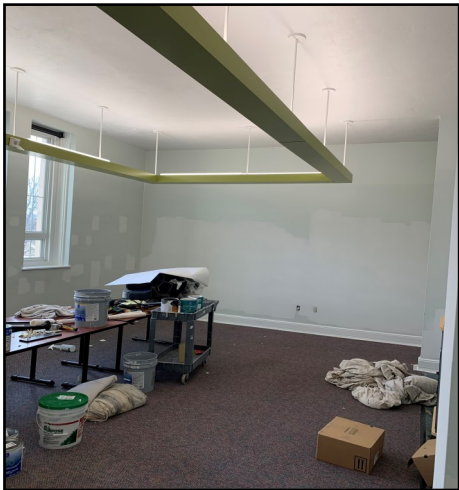
Gaunt House Chimney Repair



McKemy Renovations



Brown Hall Classroom

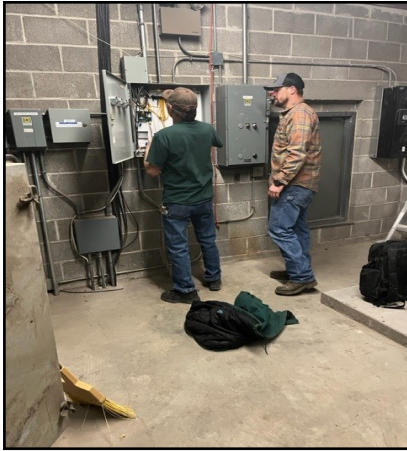


Martindale Hall 3rd Floor Renovation

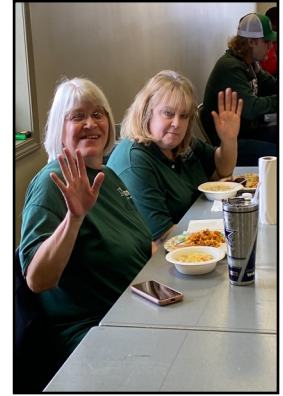


FACILITIES ON THE GO

Preparing Lamkin Gym for the basketball



Facilities Soup Bar



February Recycling

FY23	Feb-23
Recycling Revenue	\$ 669.10
Landfill lbs.	78,380
Compost	29,150
Cardboard	29,271
Paper	12,517
Plastic	2,023
Aluminum	665
Metal	3,180
Glass	3,490
Total Monthly Recycled lbs.	51,146
Total Waste Generated	158,676
Total Waste Divereted	80,296
Waste Diversion Rate %	50.60

Completed Work Orders March Total - 1,715

Maintenance	1276	Recycle	4
Custodial	53	Sign Shop	22
Landscape	27	Transportation	293
Health & Safety	29	Central Plant	11

WE'RE HIRING



- ♦ Several Custodial positions (3rd shifts)
- ♦ Driver
- ♦ Groundskeeper
- ♦ Facility Services Specialist
- ♦ Maintenance Technician (2nd shift)
- ♦ MEP Supervisor

CONTACT US

Dan Haslag, AVP Facility Services
 Tina Frueh, Director of Facility Services
 Nancy Ozanne, Transportation Supervisor
 Students/Front Desk/Work Orders

660-562-1394
 660-562-1648
 660-562-1679
 660-562-1183