

EXTREME CAMPUS MAKEOVER

Northwest's own version of a reality show has been nearly 10 years in the making. Fortunately, there's no end in sight.

Whether you love 'em or despise 'em, the ever-increasing presence of reality shows on television can't be avoided. Watch enough of the tube and you can see babies being born, former celebrities attempting to lose weight, "survivors" backstabbing each other to win a million dollars and, of course, nose jobs, tummy tucks and everything in between.

Fortunately, none of these scenarios are taking place at Northwest. Instead, what is happening parallels the feel-good reality show "Extreme Makeover: Home Edition." An extreme campus makeover that many alumni and friends would tune in to had the camera crews visited Maryville during the past decade. With so many physical changes at Northwest, there's no doubt that when alumni return to campus they barely recognize their former home away from home.

Since the mid-1990s, a transformation has occurred on your "old" campus.

Based on feedback from alumni, faculty and students – people like what they see.

"Survey results consistently indicate that students are really impressed with our facilities," said Bev Schenkel, dean of enrollment management.

Written by Mitzi Lutz
Design by Melinda Kelsey
Photography by Darren Whitley

"I truly believe that the dedication Northwest has shown to improving its facilities greatly assists us in the recruitment process. When prospective students and their families visit campus, Northwest is sending an important message that we are a forward-looking institution that takes pride in everything we do."

Unlike many long-range planning documents that are tucked away in a filing cabinet, the pages of Northwest's 20-year construction plan are showing signs of wear and tear from continual reference and updating.

"Northwest has made more than \$200 million in capital improvements in the last 15 years," said Ray Courter, vice president for finance. "Our peers are envious when they hear how much we've spent, which is unheard of for a campus our size."

So where's all of this money for construction coming from? At one time, the state of Missouri picked up a large part of the tab, but since the late 1990s, state funding for higher education for capital improvements has nearly ceased. New sources of funding – the sale of revenue bonds, private donations and the University's maintenance and repair funds – are continually being tapped.

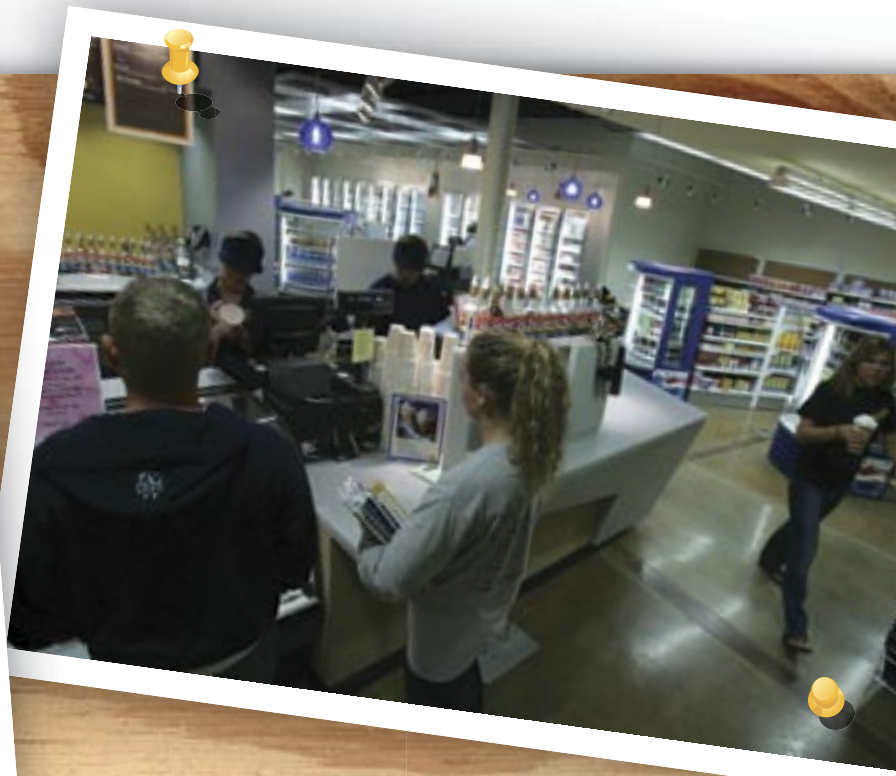
As a result, Northwest is confident its vision for the future needs of students, faculty and alumni has staying power. Furthermore, its understanding of continual facility "makeovers" could very well start a trend amongst its higher education peers – a trend that will surely outlast the appeal of reality TV.

BEARCAT STADIUM

As the success of the Bearcat football team grew, Northwest administrators realized that college sports were not just an athletic venue, but also an entertainment event that included students, families, alumni and community members. The football field and track were improved first, followed by the concession stands, restrooms and the east grandstands, or "student section." Since Northwest students were willing to pay for improvements to their stands, Northwest alumni and friends were approached to step up and do the same for their section of the stadium. As a result, more than \$5 million was raised for the construction of the west grandstands, which include 10 luxury suites, improved fan seating and press facilities as well as the only NCAA Division II scoreboard with instant replay – all features that make for a first-class game-day experience for players and spectators. The cost for all improvements from 1996 to 2003 was \$9.25 million. Previously the site of Memorial Field and Rickenbrode Stadium, the facility opened in 2003 and is now known as Bearcat Stadium.

FOREST VILLAGE APARTMENTS, TOWER SUITES AND THE STATION

The first phase of the four-phase Residential Life Master Plan included the addition of on-campus apartments and suites. Tower Suites consist of two, three-story buildings located between Phillips and Franken halls and feature two-bed and four-bed units with laundry, vending and cooking facilities on each floor. The suites are designed specifically to meet the needs of sophomore and junior students by providing more privacy than standard residential housing. The renovated Conference Center, previously Taylor Commons, is now called The Station and features a front desk for the Tower Suites, mailboxes, administrative offices, coffee shop, convenience store, meeting rooms and gathering spaces. The Station is open 24 hours a day for students to study, buy groceries or hang out with friends. Forest Village Apartments are located on the north edge of campus and are designed to meet the needs of juniors and seniors by providing privacy and amenities. Each apartment is furnished with a full kitchen, washer and dryer and computer. The apartment area also has a community building with a convenience store and meeting room. The facilities opened in August 2004 for \$27.4 million.



Clockwise: Bearcat Stadium, The Station, Forest Village Apartments

CENTENNIAL GARDEN

Northwest's wish to recognize the former residential facilities for men known as the Quads, which were built in the 1930s in the area that is now between North and South complexes, has led to the creation of the Centennial Garden. The endeavor took flight in 2002 as part of a project initiated by a student which addressed the need to improve the area's appearance and usability. Special features include a gas fire pit, water fountains, plant life, benches, a grassy area and plaques honoring the former Quads and their namesakes: C.A. Hawkins, Latin scholar and professor; A.J. Cauffield, geography instructor; J.W. Hake, physics professor; Jack McCracken, basketball All-American and A.H. "Bert" Cooper, director of field services. The Centennial Garden was completed in October 2005 for \$300,000.

CENTENNIAL SCULPTURE

A bronze, life-sized sculpture to commemorate the University's centennial stands in the east plaza of the J.W. Jones Student Union. The centennial sculpture depicts two students – one from 1905 and one from 2005 – studying on a bench. The young man, wearing knee-high boots and a cap, is shown reading a book, one page of which bears the engraved image of an early Case tractor. A stack of books bound with a book strap and topped by an apple is placed beside him. The woman, wearing jeans, boots and a "hoodie" jacket with the word "Northwest" across the front, holds an open notebook computer. Her cell phone and backpack are close by. The statue was installed in September 2005 and was funded through \$70,000 in donations.

FIRE ARTS BUILDING

Since the Olive DeLuce Fine Arts Building opened in the mid-1960s, art classes involving three-dimensional art such as welding, sculpting and pottery had been located in the building's basement, or "The Pit." Input from employees and students identified this as a health and safety concern and a top construction priority. With the EPA's assistance through a self-audit program, Northwest addressed these concerns by the construction of the new Fire Arts Building. Previously a parking lot, the triangle-shaped \$2.7 million Fire Arts Building includes ceramics space, kilns, welders, drill presses and classrooms with state-of-the-art dust collection, ventilation and sprinkler systems. Completed in the summer of 2005, the art program has seen a growth in students as a result of the improved facility.



From left: The Centennial Garden, installing the centennial sculpture, the Fire Arts Building being put to good use

COLLEGE PARK PAVILION

College Park Pavilion, located on the west side of campus across from Bearcat Stadium and the Performing Arts Center, is a performance space with a 50-foot-wide stage and is equipped with theatrical lighting and sound equipment. The pavilion has a dressing area, indoor storage space and two covered shelter areas on either side of the stage. College Park is frequently used for reunions, picnics, student gatherings and festivities held in conjunction with games at Bearcat Stadium. The new pavilion will improve the quality of current park activities while making the area a practical venue for a much broader range of events. The structure was completed in October 2005 for \$800,000.

JOYCE AND HARVEY WHITE INTERNATIONAL PLAZA

The desire by Harvey White, a Horace Mann graduate, and his wife, Joyce Smith White '51, to show Northwest's connection to the world resulted in the creation of the Joyce and Harvey White International Plaza. The grand display of 54 flags along two parallel sidewalks just west of Colden Pond is an impressive and majestic site – day and night. The flags, which follow United Nations protocol, are representative of countries of current students and alumni. At the entrance of the International Plaza is a wall of donors and five clocks displaying time zones throughout the world. The project was completed in 1998 entirely through \$400,000 in donations.

UNDER CONSTRUCTION: HUDSON AND PERRIN HALLS

Northwest is currently in the second phase of its Residential Life Master Plan. This phase includes the removal of Perrin and Hudson halls and the addition of freshman suites in their space. The contemporary-designed buildings will include 498 beds for freshmen. The rooms will be in a “pod” concept featuring five-room neighborhoods. The new residence halls have a \$31.7 million price tag and will be complete in the summer of 2007. ■



Clockwise: College Park Pavilion, re-construction of Hudson and Perrin halls into freshman suites, the International Plaza's flag-raising ceremony