






Off-Campus Access Using the Remote Desktop Connection with a MAC

Logging onto the Remote Desktop Connection with a MAC

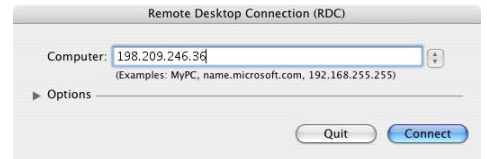
The Remote Desktop Connection will allow you to change your Northwest NT (email) password from off-campus.

To use the Remote Desktop Connection if you have a MAC, go to the following web page:

<http://www.microsoft.com/mac/downloads.aspx>

1. Scroll down to Other products and click on **Remote Desktop Connection Client 1.0.3 for Mac OS X**.

2. Click on **English (.bin)** and *save* it to your computer desktop.
3. The downloaded file should *automatically expand* and a new icon titled Remote Desktop Connection will appear on the desktop.
4. *Double-click* the **Remote Desktop Connection** icon.
5. In the window that opens, *double-click* the **Remote Desktop Connection** folder *icon*.

6. In the next window, *double-click* the **Remote Desktop Connection** *icon*.


7. Click **Accept** on the agreement window.
8. Click **Register Later** on the register window.
9. Enter **198.209.246.36** for the Computer.



10. When finished, go to **Start** and **Logoff**.

