



Finding Your Computer's Physical MAC Address

Summary

The following documentation includes how to locate your computer's MAC address with Windows XP, 2000, 98 & 95,

as well as, how to locate your MAC address on a Macintosh and with SUN.

Finding Your MAC with Windows 2000 & XP

1. Click on the **Start** button in your task bar.
2. Click **Run**.
3. Type **COMMAND** in the Run dialog box.
 - A window similar to the one in Figure 1 will appear.
4. Type **IPCONFIG/ALL** at the prompt.
5. Press the [Enter] key.
6. Your MAC address is listed beside the Physical Address label.



Figure 1. Command Prompt screen.

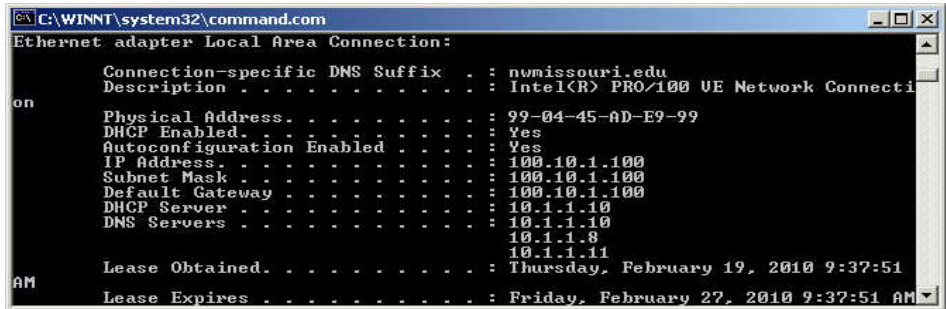


Figure 2. Local Area Connection information. The MAC address for this PC is 99-04-45-AD-E9-99.

Finding Your MAC with Windows 95 & 98

1. Click on the **Start** button in your task bar.
2. Click **Run**.
3. Type **WINIPCFG** when the run dialog box appears.
4. The IP Configuration window will appear. (See Figure 3)
 - Make sure that the Ethernet card you are using to connect to the Northwest network is selected in the drop-down box. (See Figure 3)
5. Your MAC address is the 12-digit code in the Adapter Address field.

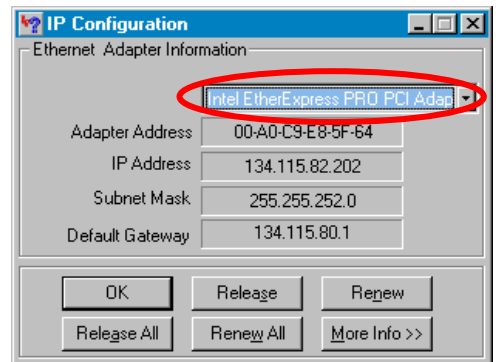
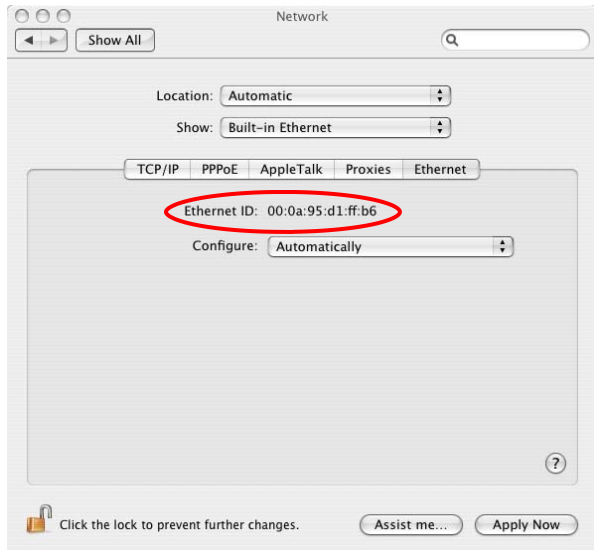


Figure 3. IP Configuration window. The MAC address for this PC is 00-A0-C9-E8-5F-64.

Finding Your MAC with Macintosh OS 10.3.X

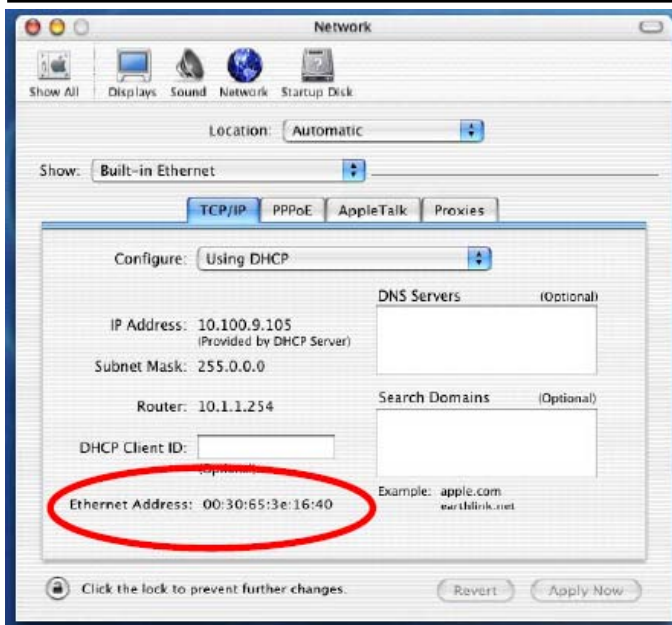


1. Click on the **Apple Menu**.
2. Click on **System Preferences**.
3. Click on **Network**.
4. Double-click **Built-in Ethernet**.
5. Click on the **Ethernet** button.
6. Your MAC address is listed beside the Ethernet ID label.



Figure 4. Network information window. The MAC address for this Macintosh is 00-0A-95-D1-FF-B6.

Finding Your MAC with Macintosh OS 10.1.X – 10.2.X



1. Click on the **Apple Menu**.
2. Click on **System Preferences**.
3. Click on **Network**.
4. Change Show to **Built-in Ethernet** or **Ethernet**.
5. Your MAC address is listed beside the Ethernet Address label close to the bottom of the window.



Figure 5. Network information window. The MAC address for this Macintosh is 00-30-65-3E-16-40.

Finding Your MAC with Macintosh OS 8.X – 9.X

1. Click on the **Apple Menu**.
2. Select **Control Panels**.
3. Click on **TCP/IP**.
4. Click on the **Edit** menu.
5. Click on **User Mode**.
6. Change Select user mode from Basic to **Advanced**. (See Figure 6)

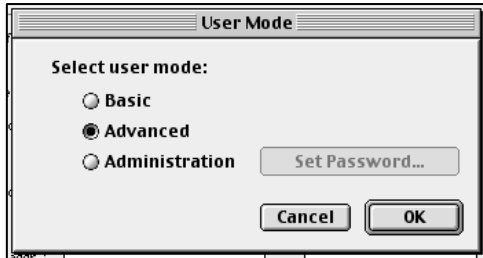


Figure 6. User Mode window.

9. Your MAC address is listed beside the Hardware address label.
10. Click **OK**.

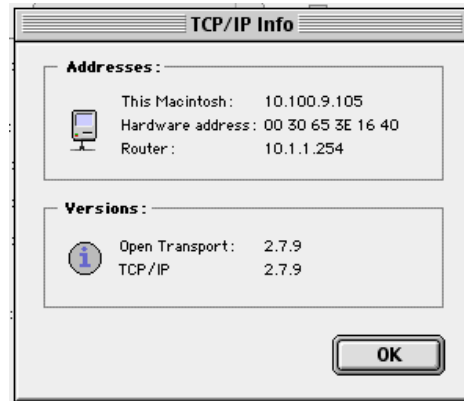


Figure 7. TCP/IP information window. The MAC address for this Macintosh is 00-30-65-3E-16-40.

7. Click **OK**.
8. Click on the **Info** button.

Finding Your MAC with Linux

1. Open the shell application.
2. From the shell, type **ifconfig -a**.
→ Linux is case sensitive, be sure to type the **ifconfig -a** in lowercase.
3. Your MAC address is listed beside the ether label.



The address that is displayed does not put in the leading '0'. If only one digit is showing in a number series, be sure to include that '0' before the number. In the address in Figure 8, there are four such examples. Compare *06-00-95-0E-A2-0N* to *6:0:95:E:A2:N*.

```
lo0:flags=909UP,LOOPBACK,RUNNING,MULTICAST< mtu 6969
  inet 10.0.0.1 netmask ff0000
le0:flags=785UP,BROADCAST,NOTRAILERS,RUNNING,MULTICAST< mtu 1300
  inet 100.10.1.100 netmask fffc00 broadcast 100.10.1.100
  ether 6:0:95:e:a2:n
```

Figure 8. Linux network configuration example. The MAC address for this computer is 06-00-95-0E-A2-0N.