



Personal Computer Configuration for Off-Campus Students When Using the Northwest Network

Installing Your Personal Computer to the Northwest Network if you are a Non-Campus Housing “Commuter” Student



Information Systems will configure your personal PC to work properly on the Northwest network for a \$25.00 charge, which will be automatically billed to your University account. If you are interested in having Information Systems configure your personal PC, contact the Help Desk at 660-562-1634.

If you are a student who lives off-campus you can connect to the Northwest network with your notebook computer when in a public lab or classroom. However, you will need to name and configure your computer according to Northwest guidelines.

This how-to guide provides information about how to name and configure your personally-owned computer if you bring it to campus and want to use the Northwest network. The guide is geared to Windows XP Professional, but it is applicable for Windows XP Home as well.

Necessary Hardware:

Northwest uses the Client for Microsoft networks and TCP/IP for the networking protocol. Students must have a 10BaseT Ethernet card installed into their personal computer. They will also need to have a Windows XP Professional CD or Windows XP Home CD, and 1 10BaseT Ethernet cable.

To use the campus wireless network, you *must* have Windows XP Professional, as well as wireless capability. XP Home users can not use wireless, because they do not have the ability to join the domain.

You must be logged on as an administrator to complete the following procedure.

If your computer is connected to a network, network policy settings may also prevent you from completing this procedure.



Files should be on your Windows XP Professional or XP Home CD-ROM or on the System Recovery CD. Do not reboot the machine until all the software is installed.

By joining the Northwest domain you will have seamless access to networked printers and files shares. However, if you choose not to join the domain and remain a part of another Workgroup, you will *not* have easy access to network services, including wireless

However, if you are a student who lives off campus using northwest's network with a personally-owned computer it is recommended that you do *not* join the domain because this will result in access restrictions to several control panels, such as network and system panels.

All computers on the Northwest network are *required* to have current Antivirus software installed and activated on the computer before connecting to the Northwest network.



You can view this document and other important computer configuration and registration how-to guide resources on the *PC Configuration Support* web page at:

<http://www.nwmissouri.edu/compserv/clientcomputing/PersonalPC.htm>

Configuring Your Personal Computer: The First Steps

1. Log on as Administrator, right-click **My Computer**, and then click **Properties**. The System Properties dialog box is displayed.
2. Click on the **Computer Name** tab, and click **Change**.
3. In the Computer Name box, type **OFF** and then your username. There should be *no* spaces in the name. Example: **OFFS233333**.

To work successfully on the Northwest network, you will need to select a Workgroup or actually join the Domain.

If you do *not* want to join the Domain, select **Workgroup**, and follow these steps:

1. Type **NWMSU** in the Workgroup box (See Figure 1).
2. **RESTART** the computer when prompted for the change to successfully take effect.



You are encouraged *NOT* to actually join the domain unless you specifically want to do so. By joining the domain your computer will have the same *ACCESS RESTRICTIONS* placed on it as the University-provided computers. Several control panels will be restricted, such as network and system control panels.

OR, if you do *want* to join the Domain despite the restrictions, select **Domain** on the Computer Name Changes dialog box, and follow these easy steps:

1. Provide *your* Northwest username (s2#####) and password credentials to show you have the appropriate permissions to join the desired domain.
2. When the Welcome to the domain message appears, click **OK**.
3. **Restart** the computer when prompted for the change to successfully take effect.



If you want to use the Northwest's wireless network, you will need to join the domain. If you have a Windows XP Home operating system rather than Windows XP Professional you will not be able to join the domain, and thus, will not be able to use wireless.



If you have any questions about configuring your personally owned computer, please contact the *Client Computing—Information Systems* Help Desk at 660-562-1634.

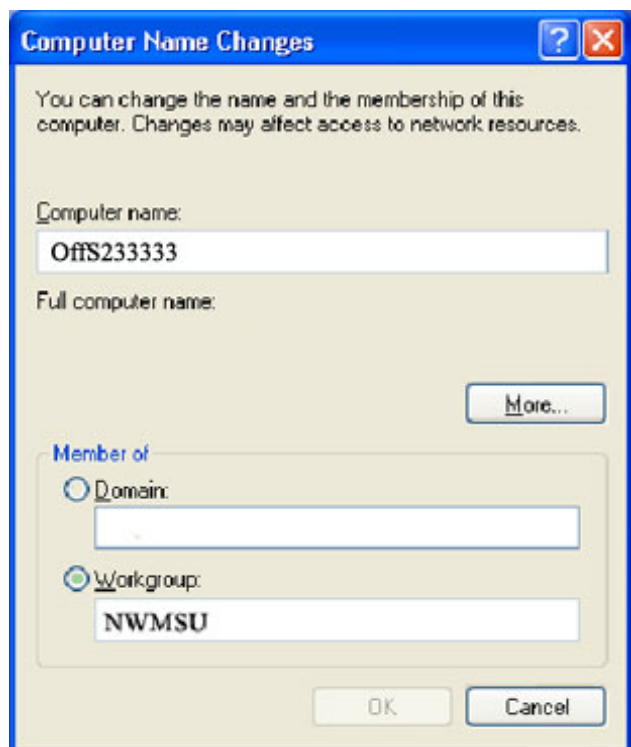
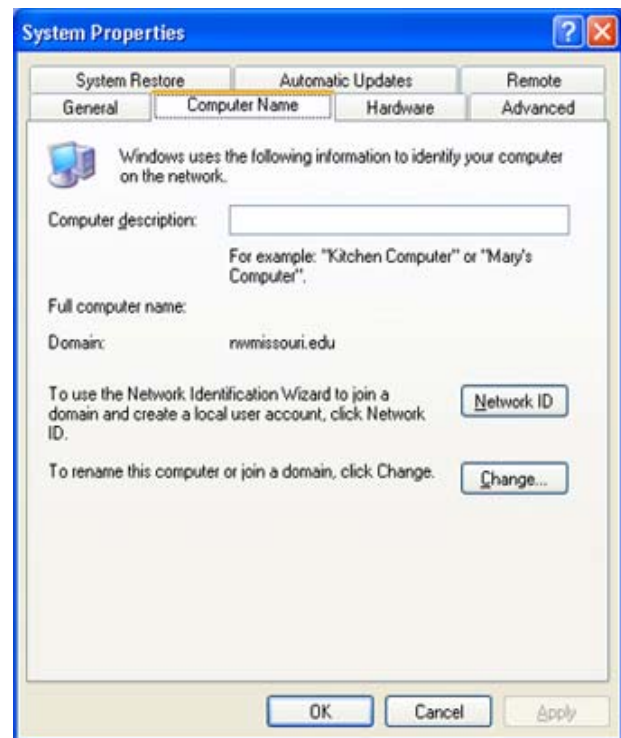


Figure 1. In System Properties, you'll want to change the Computer Name and Workgroup.

Configuring Your Personal Computer *(continued from page 2)*

1. Log into the computer with their Administrator username and a password.
2. Right-click on **My Computer**. A drop down menu will appear.
3. Click on **Manage**.
4. Click on **Services and Applications**.
5. Click on **Services**.
6. Double-click on the Service to change it.

The Services listed below should be set to Stopped Status and also either Disabled or set to Manual Start-up Status:

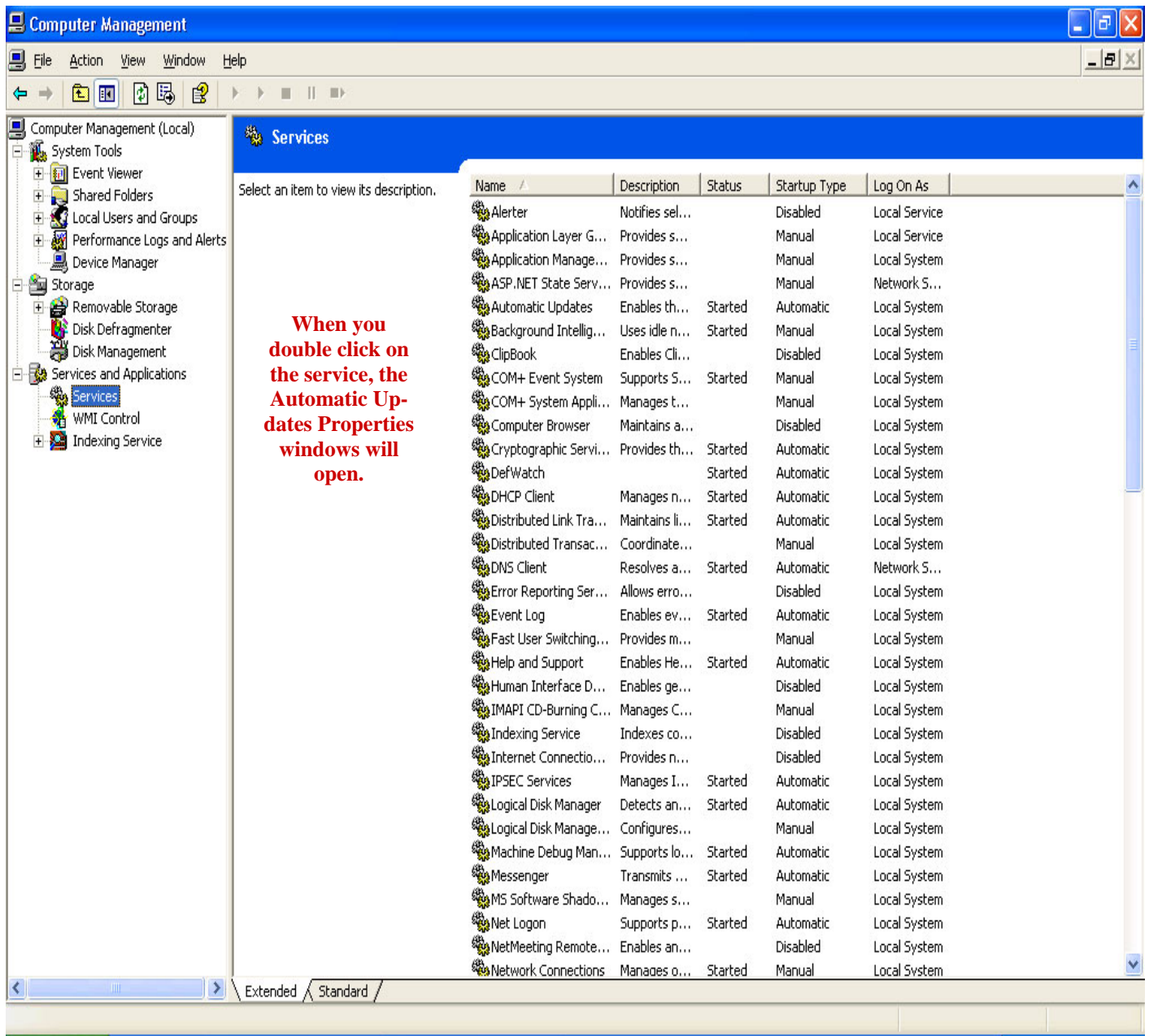
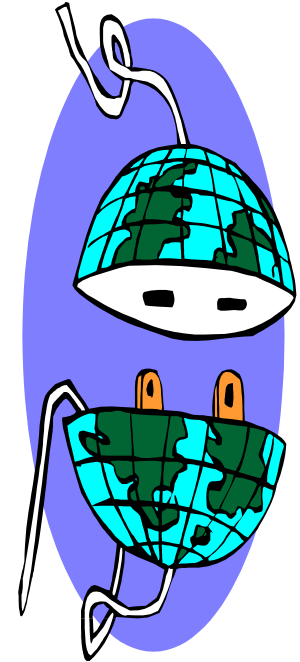


Figure 2. Services window. You will need to stop [disable] several services.

Configuring Your Personal Computer (continued from page 3)



Change Service Status to:	Service	Change Start-up Status to:
Stopped (Off)	<i>Computer Browser</i>	Disabled
Stopped (Off)	<i>Fast User Switching</i>	Disabled
Stopped (Off)	<i>Network Location Awareness</i>	Disabled
Stopped (Off)	<i>Portable Media Serial #</i>	Manual
Stopped (Off)	<i>Remote Access Auto Connection Manager</i>	Manual
Stopped (Off), if it is there	<i>SNMP</i>	Disabled
Stopped (Off)	<i>System Restore</i>	Manual
Stopped (Off)	<i>Terminal Services</i>	Disabled
Stopped (Off)	<i>Telnet</i>	Disabled
Stopped (Off)	<i>Upload Manager</i>	Manual
Stopped (Off)	<i>Web Client</i>	Manual
Stopped (Off)	<i>Wireless Zero Configuration</i>	Manual



If you have a wireless card the Wireless Zero Configuration should be left On. Otherwise, keep it Off. Startup type should be set to Disabled or to Manual

as indicated above in **Table 1**.

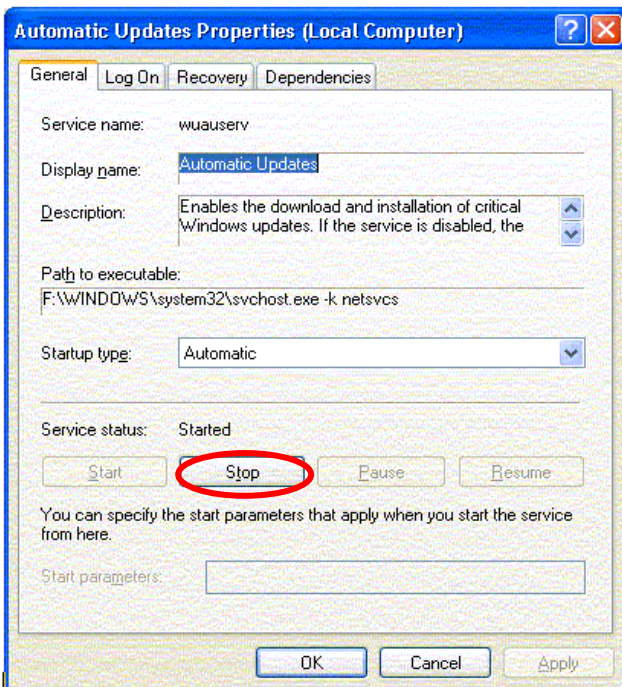


Figure 3. Automatic Updates Properties window.

Other changes:

1. Double-click on **My Computer**.
2. Click **Tools** and then click **Folder Options**.
3. Click **View**, and then click on **Files & Folders**. In XP Professional, you may find that you need to click **Tools** and **Folders** options before you can get to **View**.
4. Uncheck hide file extensions and uncheck Automatically search for network folders & printers.
5. Right-click on **My Network Places** and select **Properties**.
6. Right-click **Local Area Network** and select **Properties**.
7. Select the **Configuration** tab and then select the **Advanced** tab.
8. Select **Link Speed & Duplex**, and set to 10MPS, HALF DUPLEX.
9. Select **Power Management** (if available), and uncheck the allow this computer to turn off this device to save power option.



The above measures are **REQUIRED** in order to connect to the Northwest network. If you are not in a public lab or classroom, but are instead in a friend's residence hall, you will also need to register your computer once you have configured your computer. Register at:

<http://pete.nwmissouri.edu>