

## VISTA Wireless Instructions

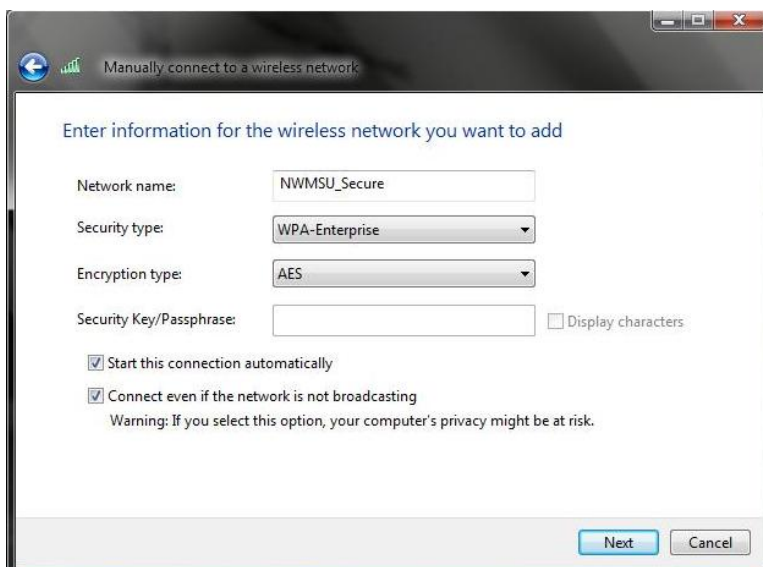
1. Go to Start, then **Control Panel**.
2. Select **Network and Sharing Center** (click on **Classic View** if it's not already selected on the left side)
3. On the left select **Manage Wireless Networks**.
4. Click the **Add** button



5. Select **Manually create a network profile**.



6. Fill in and select the information as below.
7. Then click **Next**.



8. Click on the **Change Connection Settings**.



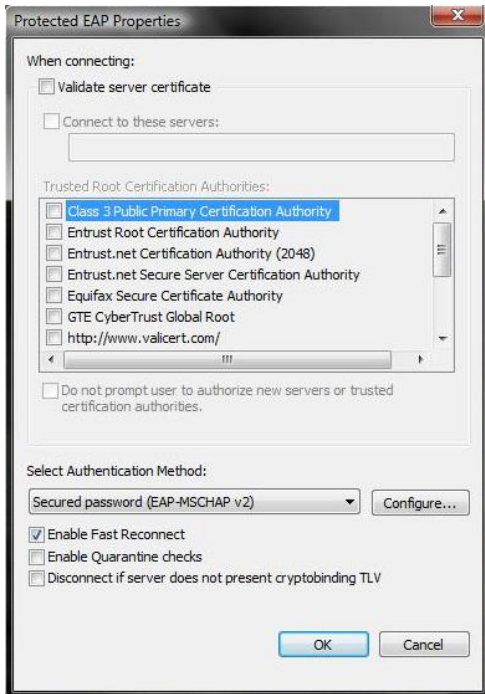
9. Fill in and select the information below



10. Make sure these settings match yours and then click on **Settings...**



11. Make sure your settings match the below. Then click on **Configure**.



12. Make sure this box is NOT selected. Then press **OK**. (press **OK** on all remaining and open boxes).



13. A pop up should be showing at the bottom right of your computer, click on the inside it.



14. Input your **S#** and password(your email/myNorthwest password). Then select **OK**.



15. Your wireless should now automatically connect on campus in buildings that have a NWMSU\_Secure connection.